

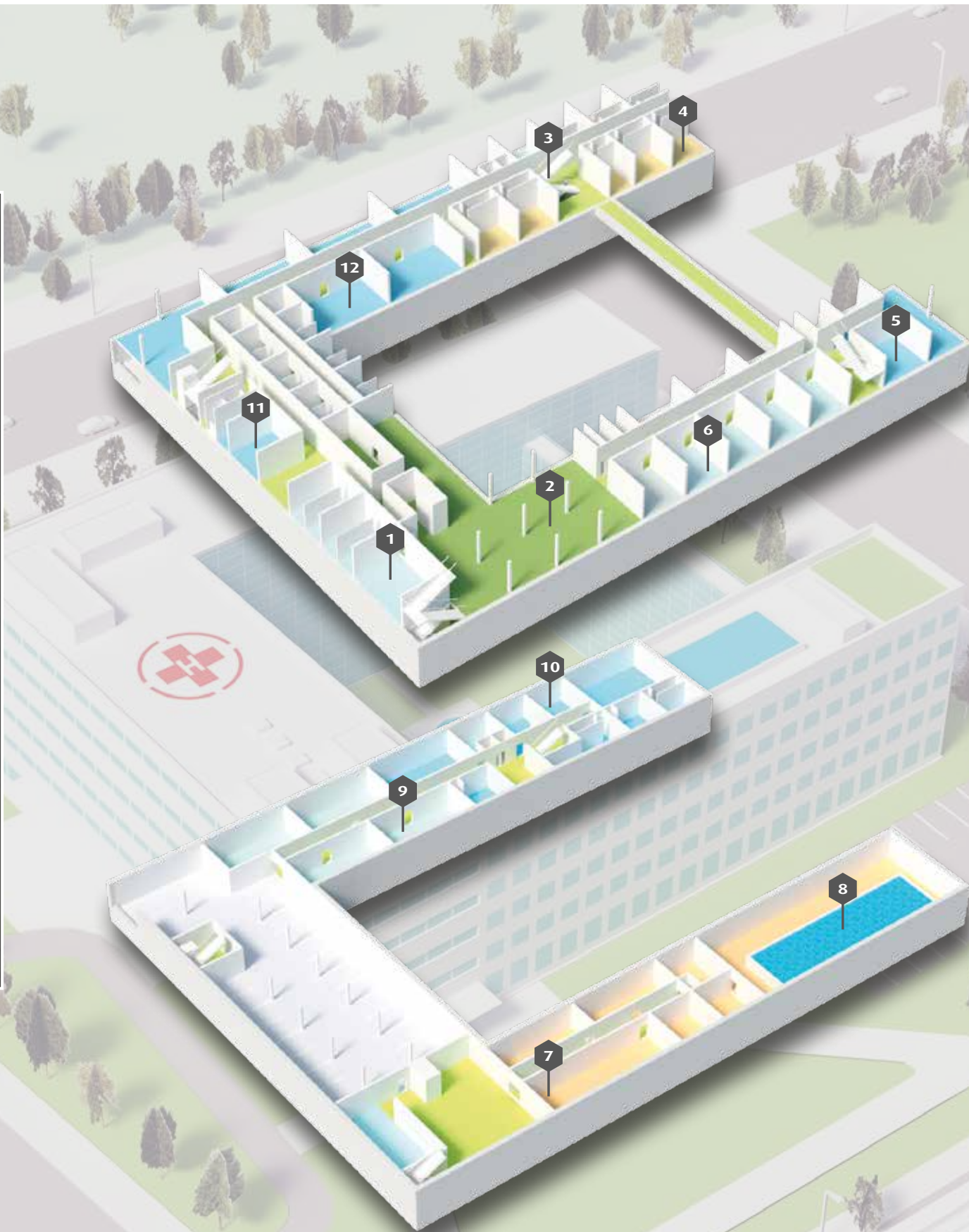
| **Your Healthcare Solution:**
Hygienic, easy to clean, durable
and maintainable |



| The best solution for every loading class! |

| Loading Class (Hospital)

- None
1. Administration, offices
- Low
2. Entrance area, waiting room
3. Corridors, elevator, public toilets
- Medium
4. Sickrooms
5. Laboratories
6. Commercial kitchen
7. Bathrooms and hygiene rooms
8. Therapeutic pool
9. Treatment room
- High
- 10.X-ray centres
- 11.Intensive care and infectuous disease units
- 12.Operating rooms



Selection Guide	5 – 6
-----------------	-------

Product Description	7 – 14
---------------------	--------

Performance Specification	15 – 16
---------------------------	---------

Chemical Resistance	17
---------------------	----

References	18
------------	----

Detailing	19 – 24
-----------	---------

Cleaning and Maintenance	25 – 26
--------------------------	---------

Sustainability	27
----------------	----

Further Systems	28
-----------------	----

| The best solutions for every loading class

When it comes to interior design, the activities being carried out within the room need to be considered to ensure the appropriate tiling products are specified. These can be divided into the following processes and product families.

Loading Class (refers to the healthcare activities performed in the respective area)	Typical area (example of the room)	Ceramic covering	Tile Grouts – Wall – Floor	Tile Adhesives	Membranes	Levelling Compounds – Wall – Floor
None	Administration, offices	Stoneware tiles	SCHÖNOX® WD FLEX – Not for floors	SCHÖNOX® Q2 SCHÖNOX® Q6 SCHÖNOX® Q8		SCHÖNOX® BM 10 SCHÖNOX® FPL PLUS
		Earthenware tiles	SCHÖNOX® UF PREMIUM			
		Fully vitrified tiles (gres)				
		Glass-Mosaic				
		Natural stone tiles susceptible to discolouration		SCHÖNOX® Q6 W SCHÖNOX® Q9 W		
Low (no real healthcare treatment offered in this area)	Waiting room/day room Corridors & Hallways Staff/locker rooms Elevators	Stoneware tiles	SCHÖNOX® WD FLEX – Not for floors	SCHÖNOX® Q2 SCHÖNOX® Q6 SCHÖNOX® Q8		SCHÖNOX® BM 10 SCHÖNOX® FPL PLUS
		Earthenware tiles	SCHÖNOX® UF PREMIUM			
		Fully vitrified tiles (gres)				
		Glass-Mosaic				
		Natural stone tiles susceptible to discolouration		SCHÖNOX® Q6 W SCHÖNOX® Q9 W		
	Public toilets	Stoneware tiles	SCHÖNOX® WD FLEX – Not for floors	SCHÖNOX® Q2 SCHÖNOX® Q6 SCHÖNOX® Q8	SCHÖNOX® AB/WSF SCHÖNOX® HA SCHÖNOX® 1K DS PREMIUM	SCHÖNOX® BM 10 SCHÖNOX® FPL PLUS
		Earthenware tiles	SCHÖNOX® UF PREMIUM SCHÖNOX® CF DESIGN			
		Fully vitrified tiles (gres)				
		Glass-Mosaic				
		Natural stone tiles susceptible to discolouration		SCHÖNOX® Q6 W SCHÖNOX® Q9 W		
Medium (regular healthcare treatment performed in this area)	Sickrooms, Ward, Examination & treatment rooms Laboratories Disinfection rooms Bathrooms and Hygiene rooms	Stoneware tiles				
		Earthenware tiles	SCHÖNOX® CF DESIGN (2K-epoxy) SCHÖNOX® XR 40	SCHÖNOX® Q6 SCHÖNOX® Q8 SCHÖNOX® KR (2K-epoxy)	SCHÖNOX® AB/WSF SCHÖNOX® 1K DS PREMIUM SCHÖNOX® 2K DS RAPID	SCHÖNOX® BM 10 SCHÖNOX® FPL PLUS
		Fully vitrified tiles (gres)				
		Glass-Mosaic				
		Natural stone tiles susceptible to discolouration				
	Commercial Kitchens	Earthenware tiles	SCHÖNOX® CON BODEN (2K-epoxy) SCHÖNOX® XR 40	SCHÖNOX® Q6 SCHÖNOX® Q8 SCHÖNOX® KR (2K-epoxy)	SCHÖNOX® AB/WSF SCHÖNOX® EA PUR (2K-polyurethan)	SCHÖNOX® BM 10 SCHÖNOX® FPL PLUS
		Fully vitrified tiles (gres)				
High (advanced healthcare treatment performed in this area, specific demands for hygiene)	Operating rooms Sterile rooms Rooms for specific treatment (dialysis, endoscopy, etc.) Intensive care & Infectious disease units	Stoneware tiles				
		Earthenware tiles	SCHÖNOX® CF DESIGN (2K-epoxy) SCHÖNOX® XR 40	SCHÖNOX® Q6 SCHÖNOX® Q8 SCHÖNOX® KR (2K-epoxy)	SCHÖNOX® AB/WSF SCHÖNOX® 1K DS PREMIUM SCHÖNOX® 2K DS RAPID	SCHÖNOX® BM 10 SCHÖNOX® FPL PLUS
		Fully vitrified tiles (gres)				
		Glass-Mosaic				
		Natural stone tiles susceptible to discolouration				

For renovation projects, please use our highly dust reduced, extremely flexible special powder adhesive SCHÖNOX® Q12.

Fore more details visit our website www.schoenox.com.

| SCHÖNOX® Q6

Low dust, flexible universal powder adhesive

The perfect universal solution even for higher project requirements



- Appr. 90 % less dust while mixing
- EMICODE EC 1^{PLUS} R: very low emission, regulated
- Contains lightweight fillers
- Adjustable consistency
- Layer-thickness up to 25 mm
- Suitable with the thin-bed, mid-bed and thick-bed method on walls and floors
- Pourable application on floors



| SCHÖNOX® Q8

Low dust, light weight powdered tile adhesive

Sustainability and efficiency for environmental constructions



- Appr. 90 % less dust while mixing
- Contains lightweight fillers: only 15 kg – easy to carry
- EMICODE EC 1^{PLUS} R: very low emission, regulated
- Contains approx. 50 % sustainability raw materials
- Adjustable consistency
- Suitable with the thin-and mid-bed method on walls and floors
- Pourable application on floors



| SCHÖNOX® Q2

Dust reduced, normal setting flexible adhesive

Especially for laying fully vitrified tiles, ceramic tiles and slabs by the thin-bed and mid-bed method



- Dust reduced
- Synthetic resin-modified
- EMICODE EC 1^{PLUS} R: very low emission, regulated
- Suitable for application on subfloor heating systems
- Sturdy
- Long open time
- Possible to level out



| SCHÖNOX® KR

Epoxy-resin tile adhesive

2-component adhesive for use on ceramic tiles in chemical areas



- Highly loadable
- Resistant against alkalines, diluted acids and disinfecting agents
- Water resistant according EN 12004
- Resistant to saponification
- Resistant against ageing
- Solvent-free according to TRGS 610



| SCHÖNOX® UF PREMIUM

Pourable, flexible universal floor grouting mortar

Flexible grout for all kinds of tiles



- EMICODE EC 1^{PLUS} R: very low emission, regulated
- Water resistant
- Very high abrasion-resistance
- Water and dirt repellent
- Hardening without cracks
- Synthetic resin-modified
- Surpasses the requirement of BS 5980 concerning infestation with micro organisms



| SCHÖNOX® WD FLEX

User-friendly, water repellent, flexible grouting mortar

For narrow joints according to DIN 18 352



- EMICODE EC 1^{PLUS} R: very low emission, regulated
- Water repellent (compared to standard joint filler)
- Solid proofing (compared to standard joint filler)
- Highly fillable
- Very fine visual appearance
- Synthetic resin-modified
- Very smooth application



| SCHÖNOX® CF DESIGN

Epoxy resin colour grouting compound

For grouting ceramic coverings with resistant to chemical loadings and disinfecting agents



- Solvent-free according to TRGS 610
- Easier cleaning and brilliant colour due to pigment-coated fillers
- No discolouring of the grouts of ceramic tiles and mosaic
- Resistant against modern, acid detergent resistant
- Water and dirt repellent

* List of resistance characteristics, p. 17



| SCHÖNOX® XR 40

Hard wearing cementitious grouting mortar

For grouting ceramic coverings in areas which are exposed to mechanical load, high-pressure cleaner and limited chemical loading



- EMICODE EC 1^{PLUS} R: very low emission, regulated
- Water resistant
- Improved chemical resistance compared to cement joint mortars (see list of resistance characteristics)
- Heavy mechanical load
- Compact mortar structure
- Very high abrasion-resistance
- Resistant against biological waste materials (e.g. urine)

| SCHÖNOX® AB

Sealing and uncoupling layer

Crack-bridging sealing sheet made from a highly tear resistant polythene foil, with two-sided nonvoven, laminated for sealing in normal and highly loaded wet areas



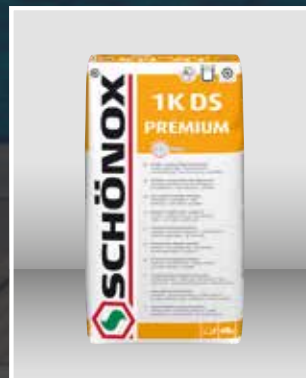
- EMICODE EC 1^{PLUS}: very low emission
- Good crack-bridging properties
- Waterproof
- Water vapour retarding
- Good adhesion to SCHÖNOX adhesives
- Rotproof
- Fulfills the requirements of ETAG 022



| SCHÖNOX® 1K DS PREMIUM

Rapid setting flexible 1-component cementitious membrane

Crack-bridging, flexible membrane especially used for sealing of high loaded commercial wet areas



- EMICODE EC 1^{PLUS} R: very low emission, regulated
- Rapid hardening
- Shrinkage optimized
- Watertight
- High bonding strength
- Resistant against ageing
- Sprayable
- Fulfills CM 02 P requirements according to EN 14891



| SCHÖNOX® HA

Ready to use, light grey waterproofing membrane

Fulfills the requirements of ETAG 022



- EMICODE EC 1^{PLUS}: very low emission
- Quick drying time
- Resistant against ageing
- Solvent-free according to TRGS 610
- Easy to apply
- Ready to use, one component membrane for preparing a waterproof bonded sealing under tiles in wetrooms



| SCHÖNOX® 2K DS RAPID

Rapid setting flexible 2-component cementitious membrane

Fulfills CM 02 P requirements according to EN 14891



- EMICODE EC 1^{PLUS} R: very low emission, regulated
- Highly flexible
- Dust reduced
- Self cross-linking, hydraulic rapid hardening
- Resistant against ageing
- Shrinkage and consumption-optimized

| SCHÖNOX® BM 10

Reduced dust, fine grained levelling concrete mortar

Suitable for filling, levelling and smoothing wall and ceiling surfaces



- Appr. 90 % less dust while mixing
- EMICODE EC 1^{PLUS} R: very low emission, regulated
- Waterproof
- Synthetic resin-modified
- High laminated stability
- Extendable above 10 mm
- Very smooth mortar structure



| SCHÖNOX® FPL PLUS

Self levelling compound for use from 3 to 60 mm

SCHÖNOX® FPL PLUS is noted for its low shrinkage properties



- EMICODE EC 1^{PLUS} R: very low emission, regulated
- Frost resistant
- Pumpable
- Ready for covering after approx. 4 hours for ceramic tiles on concrete floors and cement screed for interior areas
- Layer-thickness 3 to 50 mm without aggregates
- Layer-thickness 10 to 60 mm with aggregates
- Rapid hardening



| Performance Specification


| SCHÖNOX Tile Adhesives

SCHÖNOX Product Performance	SCHÖNOX® Q6	SCHÖNOX® Q8	SCHÖNOX® Q2	SCHÖNOX® KR
Classification EN 12004	C2 TE S1	C2 TE S1	C2 TE	R2 T
Reaction to fire	A2/A2fl s1, d0	E	A1/A1fl	E
EMICODE	EC 1 ^{PLUS} R: very low emissions, regulated	EC 1 ^{PLUS} R: very low emissions, regulated	EC 1 ^{PLUS} R: very low emissions, regulated	–
M1-code	yes	yes	yes	–
GISCODE	ZP1 – cement products, low in chromate	ZP1 – cement products, low in chromate	ZP1 – cement products, low in chromate	RE 1 – epoxy resin product solvent free, sensitising
Q-Techology (100 % safe performance – variable mix ratio)	yes	yes	–	–
Dust reduced while mixing	yes, approx. 90 %	yes, approx. 90 %	yes, approx. 90 %	–
Temperature resistant (completely cured)	–20 °C up to +80 °C	–20 °C up to +80 °C	–20 °C up to +80 °C	–20 °C up to +80 °C
Ready for foot traffic	after 12 hours	after 16 hours	after 24 hours	after 16 hours
For large formatted tiles	suitable	preferably	–	–

| SCHÖNOX Tile Grouts

SCHÖNOX Product Performance	SCHÖNOX® UF PREMIUM	SCHÖNOX® WD FLEX	SCHÖNOX® CF DESIGN	SCHÖNOX® XR 40
Classification EN 12004	--	--	R2	--
Classification EN 13888	CG2 WA	CG2 WA	RG	CG2 WA
EMICODE	EC 1 ^{PLUS} R: very low emissions, regulated	EC 1 ^{PLUS} R: very low emissions, regulated		EC 1 ^{PLUS} R: very low emissions, regulated
GISCODE	ZP1 – cement products, low in chromate	ZP1 – cement products, low in chromate	RE1 – epoxy resin prodcut solvent free, sensitising	ZP1 – cement products, low in chromate
Joint with	1–12 mm	1–6 mm	1–10 mm	2–40 mm
Dust reduced while mixing	yes, approx. 90 %	--	--	--
Temperature resistant (completely cured)	–20 °C up to +80 °C	–20 °C up to +80 °C	–20 °C up to +80 °C	–20 °C up to +80 °C
Ready for foot traffic	after 6 hours	after 12 hours	after 16 hours	after 3 hours
Chemical loadable	–	–	after 7 days	after 7 days
For large formatted tiles	preferably	suitable	suitable	preferably

| SCHÖNOX Membranes

SCHÖNOX Product Performance	SCHÖNOX® AB	SCHÖNOX® 1K DS PREMIUM	SCHÖNOX® HA	SCHÖNOX® 2K DS RAPID
Approved to ETAG 022 	yes	–	yes	yes
EMICODE	EC 1 ^{PLUS} : very low emissions	EC 1 ^{PLUS} R: very low emissions, regulated	EC 1: very low emission	EC 1 ^{PLUS} R: very low emissions, regulated
GISCODE	–	ZP1 – cement products, low in chromate	D1 – solvent-free dispersion adhesives and primers	ZP1 – cement products, low in chromate (Powder) D1 – solvent-free dispersion adhesives and primers (Dispersion)
Burst pressure	3,9 bar	–	–	–
Dust reduced while mixing	–	yes, approx. 90 %	–	–
Temperature resistant (completely cured)	–30 °C up to +90 °C	–20 °C up to +80 °C	–	–20 °C up to +60 °C

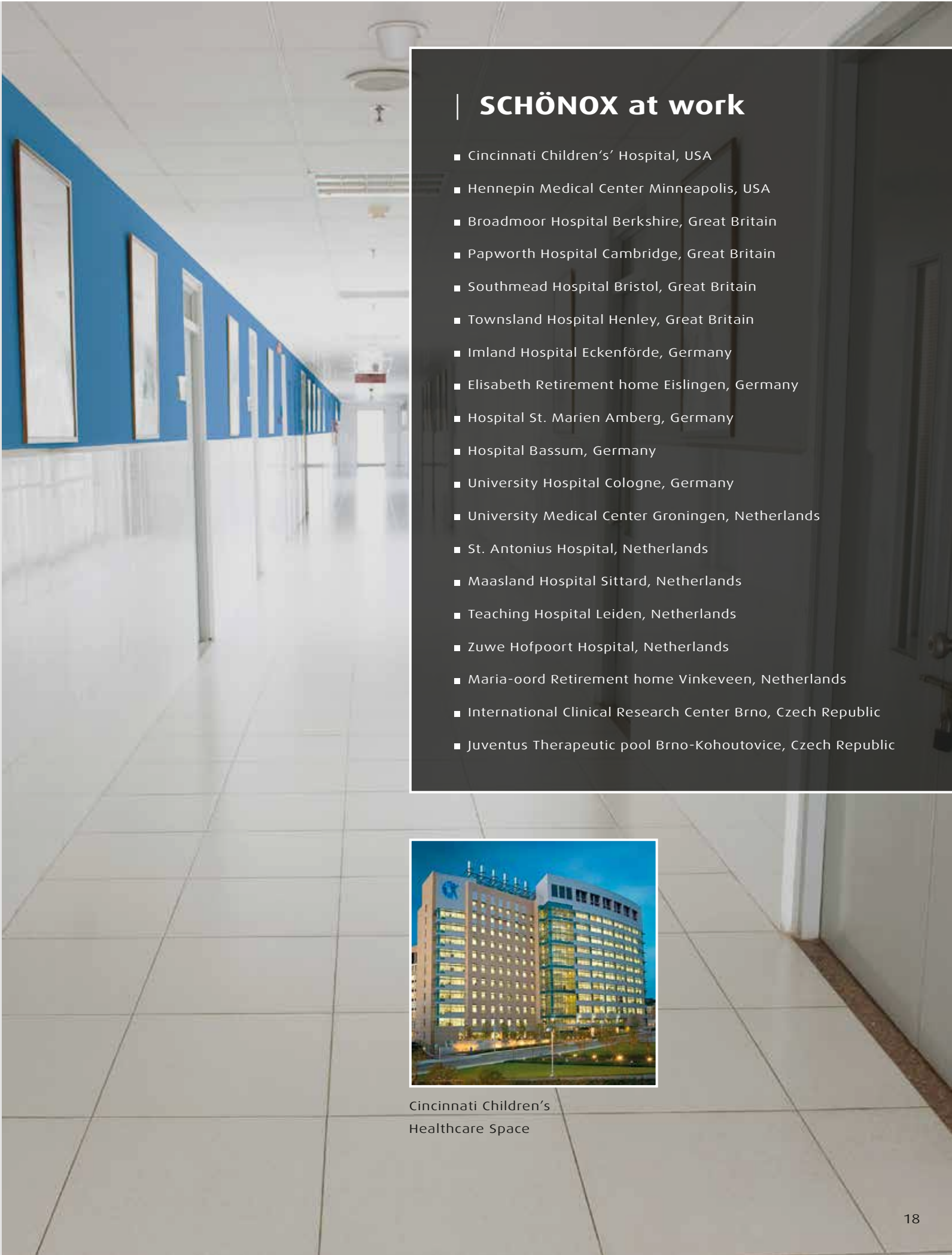
| SCHÖNOX Levelling Compounds

SCHÖNOX Product Performance	SCHÖNOX® BM 10	SCHÖNOX® FPL PLUS
Classification EN 998-1	CS IV	–
Classification EN 13813	–	CT-C25-F6
Reaction to fire	A2-s2, d0	A1/A1fl
EMICODE	EC 1 ^{PLUS} R: very low emissions, regulated	EC 1 ^{PLUS} R: very low emissions, regulated
GISCODE	ZP1 – cement products, low in chromate	ZP1 – cement products, low in chromate
Layer thicknesses	1–10 mm, extended 20 mm	3–50 mm, extended 60 mm
Dust reduced while mixing	yes, approx. 90 %	–
Ready for foot traffic	–	after 4 hours
Ready for covering	after approx. 24 hours	ceramics after approx. 4 hours

| SCHÖNOX® CF DESIGN

Name	Formula	Chemical resistance
Acetone	C ₂ H ₂ O	–
All-purpose cleaner		+
Old paint		+
Old oil		+
Formic acid 3 %	CH ₂ O ₂	(+)
Formic acid 5 %	CH ₂ O ₂	(+)
Formic acid 10 %	CH ₂ O ₂	–
Formic acid 100 %	CH ₂ O ₂	–
Ammonia 25 %	NH ₄ OH	+
Beer		+
Soft drink containing caffeine		+
Diesel oil		+
Acetic acid 5 %	C ₂ H ₂ O ₂	(+)
Acetic acid 10 %	C ₂ H ₂ O ₂	(+)
Acetic acid 30 %	C ₂ H ₂ O ₂	–
Ethanol 10 %	C ₂ H ₄ O	(+)
Ethanol 100 %	C ₂ H ₄ O	(+)
Chlorinated water	HOCl	(+)
Gearbox oil		+
Glycerine 100 %	C ₂ H ₄ O ₂	+
Potassium hydroxide solution 20 %		(+)
Concentrated saline solution		+
Carbonated water		+
Cod liver oil		+
Linseed oil		+
Carbonated soft drink		+
Seawater		+
Methanol	CH ₂ O	–
Milk		+
Diary products		+
Lactic acid 5 %	C ₂ H ₄ O ₂	+
Lactic acid 10 %	C ₂ H ₄ O ₂	(+)
Mineral water		+
Moor water		+
Engine oil		+
Sodium carbonate saturated	Na ₂ CO ₂	+
Sodium chloride saturated	NaCl	+

Name	Formula	Chemical resistance
Sodium hypochlorite, chlorine bleach		+
Sodium hydroxide 10 %		+
Sodium hydroxide 50 %		+
Olive oil		+
Orange juice		+
Paraffin oil		+
Vegetable oil, papeseed oil		+
Phosphoric acid 30 %	H ₂ PO ₄	+
Phosphoric acid 50 %	H ₂ PO ₄	+
Castor oil		+
Nitric acid 5 %		+
Nitrohydrochloric acid 10 %	HNO ₂	+
Nitrohydrochloric acid 25 %	HNO ₂	(+)
Hydrochloric acid 3 %	HCl	(+)
Hydrochloric acid 10 %	HCl	(+)
Hydrochloric acid 20 %	HCl	(+)
Hydrochloric acid 30 %	HCl	(+)
Lard		+
Solfuric acid 20 %	H ₂ SO ₄	(+)
Solfuric acid 50 %	H ₂ SO ₄	(+)
Solfuric acid 70 %	H ₂ SO ₄	(+)
Soap solution		+
Soap cleaner		+
Salt water		+
Spirit		(+)
Tetrahydrofuran		–
Thermal water		+
Toluol	C ₂ H ₄	–
Washing and rinsing detergents		+
Distilled water	H ₂ O	+
Hydrogen peroxide	H ₂ O ₂	+
Wine		+
Dihydroxysuccinic acid 10 %	C ₂ H ₄ O ₄	+
Whisky		+
Xylene	C ₂ H ₁₀	(+)
Citric acid 10 %	C ₂ H ₄ O ₂	(+)
Sugar solution 10 %		+



| SCHÖNOX at work

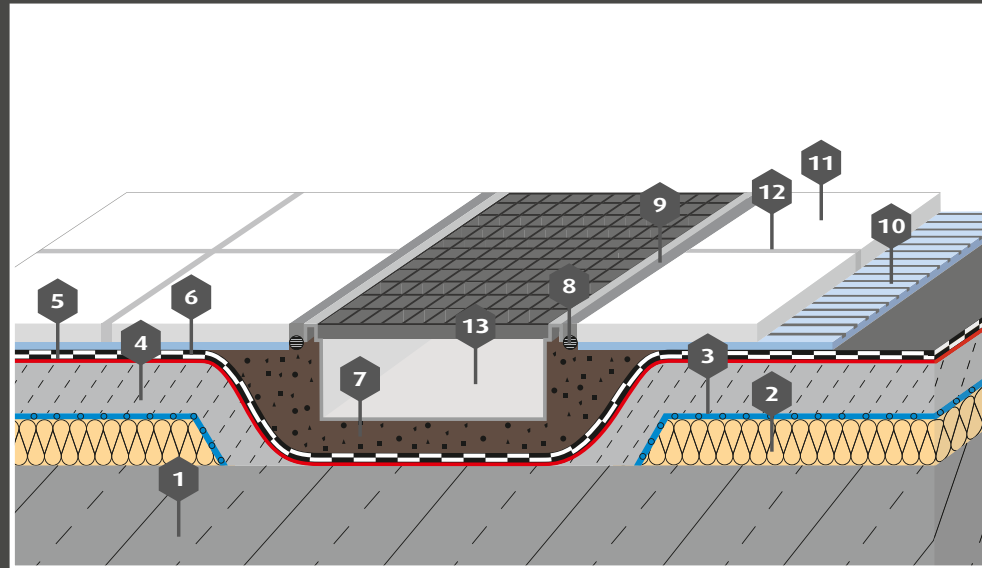
- Cincinnati Children’s Hospital, USA
- Hennepin Medical Center Minneapolis, USA
- Broadmoor Hospital Berkshire, Great Britain
- Papworth Hospital Cambridge, Great Britain
- Southmead Hospital Bristol, Great Britain
- Townsland Hospital Henley, Great Britain
- Imland Hospital Eckenförde, Germany
- Elisabeth Retirement home Eisingen, Germany
- Hospital St. Marien Amberg, Germany
- Hospital Bassum, Germany
- University Hospital Cologne, Germany
- University Medical Center Groningen, Netherlands
- St. Antonius Hospital, Netherlands
- Maasland Hospital Sittard, Netherlands
- Teaching Hospital Leiden, Netherlands
- Zuwe Hofpoort Hospital, Netherlands
- Maria-oord Retirement home Vinkeveen, Netherlands
- International Clinical Research Center Brno, Czech Republic
- Juventus Therapeutic pool Brno-Kohoutovice, Czech Republic



Cincinnati Children’s
Healthcare Space

| Commercial Kitchen

Drain gutter

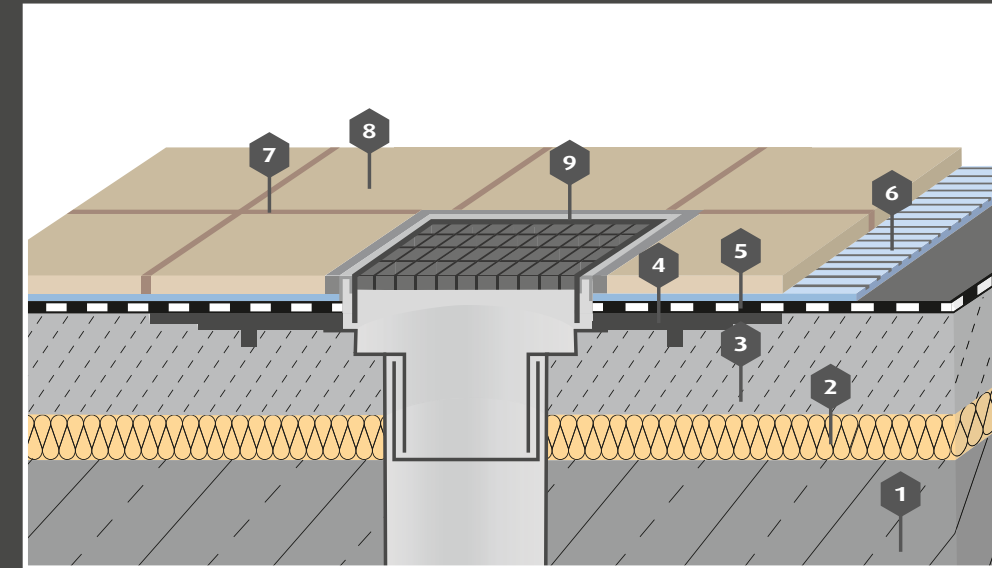


- 1 Concrete
- 2 Insulation
- 3 PE-foil
- 4 Screed
- 5 **SCHÖNOX® GEA** Primer
- 6 **SCHÖNOX® EA PUR**
Polyurethane water-
proofing (two-layer
application)
- 7 **SCHÖNOX® EPM**
Epoxy mortar
- 8 Sika® Backing Rod
- 9 **SCHÖNOX® ES** Sealant
- 10 **SCHÖNOX® Q6**
Tile adhesive
- 11 Ceramic tiles
- 12 **SCHÖNOX® CON BODEN**
Epoxy grout
- 13 Drain



| Barrier-Free Bathroom

Floor drain



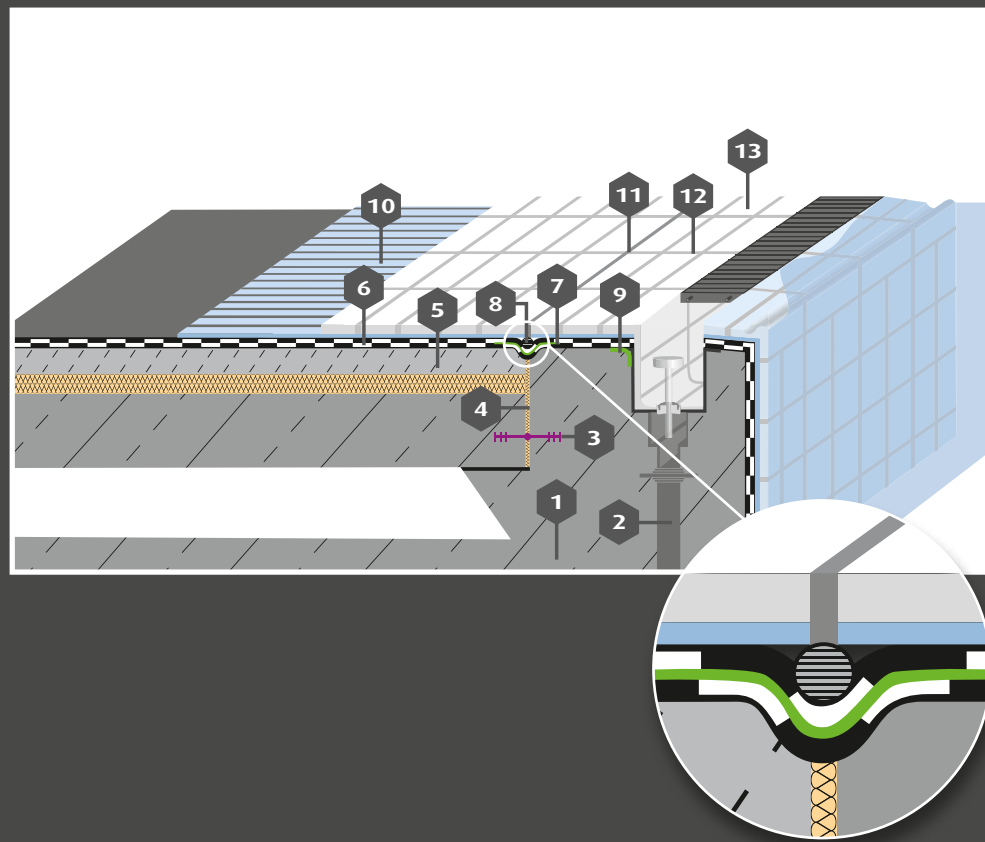
- 1 Concrete
- 2 Insulation
- 3 Screed
- 4 Flange
- 5 **SCHÖNOX® AB**
Membrane fixed with
SCHÖNOX iFIX®
- 6 **SCHÖNOX® Q6**
Tile adhesive
- 7 **SCHÖNOX® CON BODEN**
Epoxy grout
- 8 Ceramic tiles
- 9 **SCHÖNOX® ES** Sealant



Picture: Agrob Buchtal GmbH

| Therapeutic Pool

Finish System, Overflow gutter



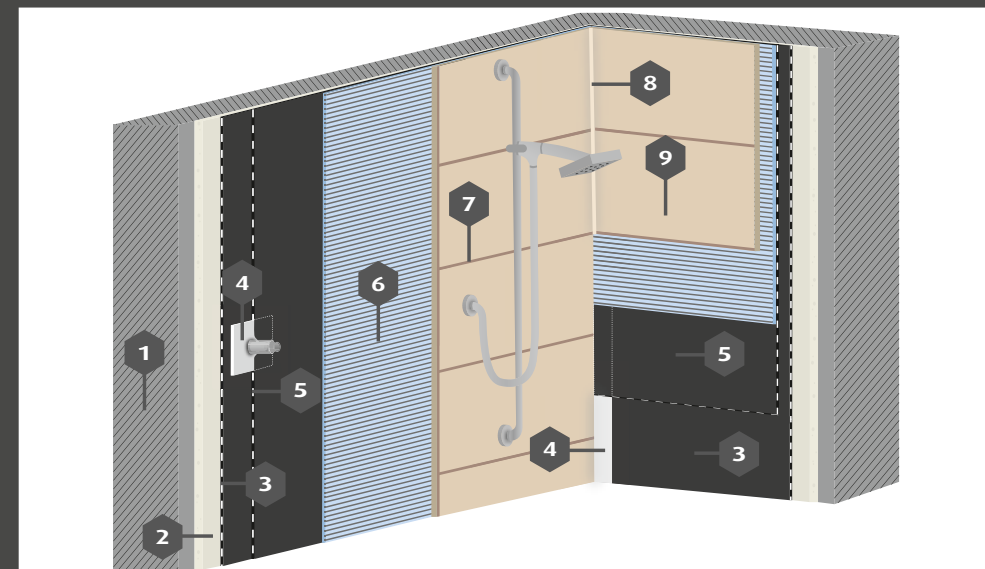
- 1 Watertight concrete
- 2 Drain
- 3 Sika®-Waterbar
- 4 Insulation
- 5 Screed
- 6 **SCHÖNOX® EA PUR**
Polyurethane waterproofing
- 7 **SCHÖNOX® ST**
Sealing tape
- 8 Sika® Backing Rod
- 9 **SCHÖNOX® CON BODEN**
Capillary barrier
- 10 **SCHÖNOX® Q6**
Tile adhesive
- 11 **SCHÖNOX® MES**
Elastic sealant
- 12 **SCHÖNOX® CF DESIGN**
Epoxy resin colour tile grout
- 13 Ceramic tiles



Picture: Agrob Buchtal GmbH

| Communal Showers

Waterproof System

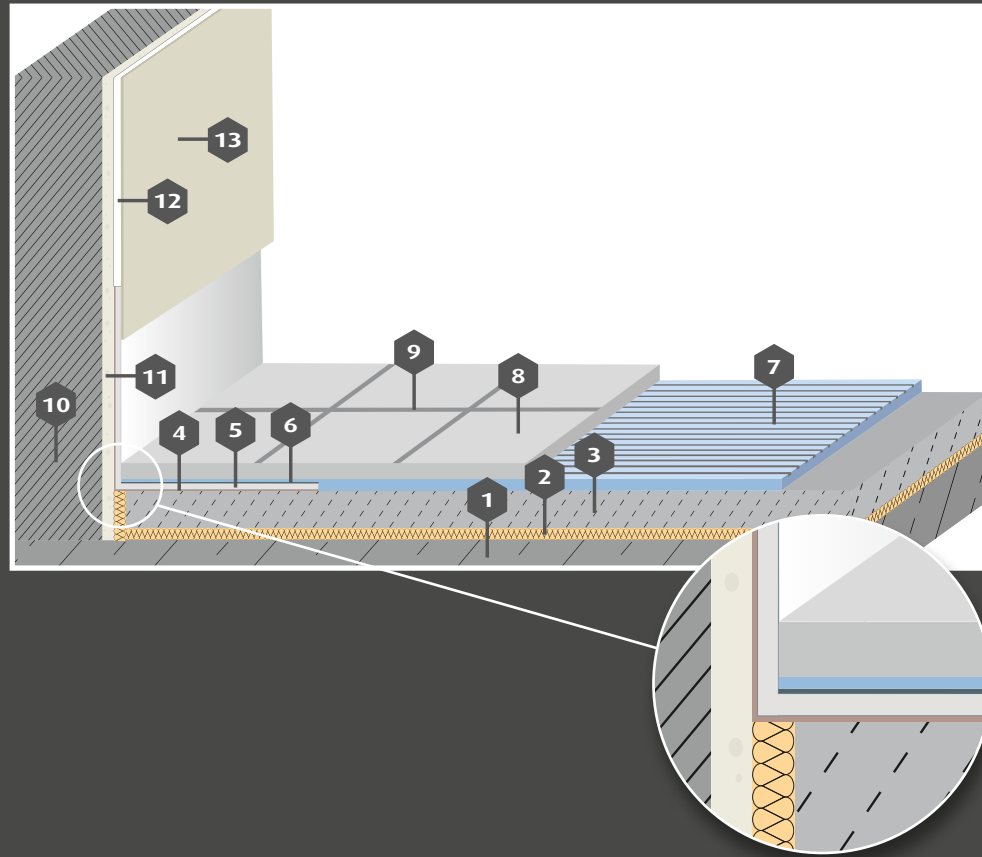


- 1 Wall
- 2 **SCHÖNOX® BM 10**
Wall Levelling compound
- 3 **SCHÖNOX® 2K DS RAPID**
Membrane
- 4 **SCHÖNOX® ST**
Gasket for Wall/Sealing Tape
- 5 **SCHÖNOX® 2K DS RAPID**
Membrane
- 6 **SCHÖNOX® Q6** Tile adhesive
- 7 **SCHÖNOX® WD FLEX**
Tile grout
- 8 **SCHÖNOX® MES**
Elastic sealant
- 9 Ceramic tiles



| Corridors/Treatment room

Wall and floor connection with stainless steel rail

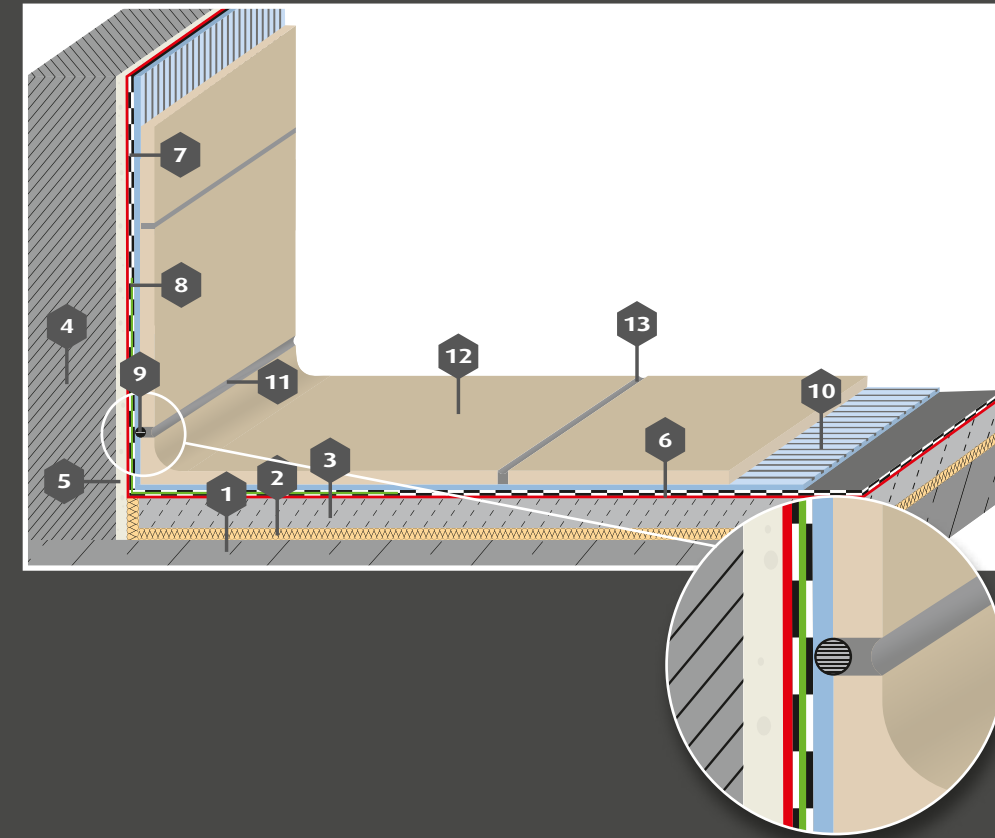


- 1 Concrete
- 2 Insulation
- 3 Screed
- 4 **SCHÖNOX® KR**
Epoxy resin adhesive
- 5 Stainless steel rail
- 6 **SCHÖNOX® SHP**
Acrylate dispersion
- 7 **SCHÖNOX® Q8**
Tile adhesive
- 8 Ceramic tiles
- 9 **SCHÖNOX® UF PREMIUM**
Tile grout
- 10 Wall
- 11 Render
- 12 **SCHÖNOX® aDECO**
Wall levelling
- 13 Sika® Hygienic Coatings



| Laboratories/Disinfection room

Concave moulding



- 1 Concrete
- 2 Insulation
- 3 Screed
- 4 Wall
- 5 **SCHÖNOX® BM 10**
Wall levelling compound
- 6 **SCHÖNOX® KH** Primer
- 7 **SCHÖNOX® 2K DS**
RAPID Membrane
(two-layer-application)
- 8 **SCHÖNOX® ST**
Sealing tape
- 9 Sika® Backing Rod
- 10 **SCHÖNOX® Q6**
Tile adhesive
- 11 **SCHÖNOX® MES** Sealant
- 12 Tile with coved skirting
- 13 **SCHÖNOX® XR 40**
Tile grout



Picture: Agrob Buchtal GmbH

| The best conditions for problem-free cleaning |

Cleaning in hospitals and medical institutions is a key prerequisite for proper operation and the protection of staff and patients against infections. Ceramic tiles are outstanding in comparison to other covering materials, allowing easy cleaning and meeting the highest of demands when it comes to design and functionality. Both glazed and unglazed tiles provide the most efficient surfaces for problem-free cleaning.

| Protecting surfaces

As a general rule, the cleaning process and cleaning agents used should be coordinated with the floor coverings, following the instructions from the respective manufacturer. It is vital that under no circumstances, cleaning agents containing hydrofluoric acid or its compound (fluoride) should be used as these can attack the ceramic surface, even when significantly diluted. To increase slip resistance and thus increase safety, slippery substances should be regularly removed as they will dramatically reduce the anti-slip effect. Cleaning machines with rotating brushes (scrubbing machines, scrubber-dryers) and liquid jet sprayers (high-pressure cleaning equipment) have proven useful for cleaning floors with a significantly textured or rough surface. Their use can be economical, even for smaller surfaces.

Please also ensure that acidic special cleaning agents that remove construction dust and cement residue are used when cleaning for the first time after laying and grouting. However, these can attack cement-based grout. You should thus protect the grout by pre-wetting and rinse the surface thoroughly after use (where applicable, neutralise).

| Surface disinfection

When it comes to the spread of pathogens, certain areas in hospitals pose a high risk. Proper cleaning alone is often insufficient to adequately reduce the number of germs. However, at this point it should be noted that the opinion on the necessity of disinfecting floors and on the specific disinfection practices deviate from each other on a global level.

| Cleaning recommendations

In sanitary areas of a patient's room

Following cleaning of the patient's room, the ceramic floor in the sanitary area is wiped with a new mop. This is soaked beforehand in a disinfectant solution (prepared according to the instructions) and squeezed lightly. The ceramic wall tiles are ideally cleaned by spraying and wiping them. The specified disinfectant solution is sprayed onto the surfaces (always ensure complete moistening) and wiped off with the clean side of a cleaning cloth after the necessary treatment time. Please ensure the specified dose, as excess doses can attack the surfaces, ceramic tiles and grout.

In commercial kitchens

Dried-on protein residues, for instance, can be removed with the two-step method using liquid jet sprayers, for which the two cleaning cycles are performed at an interval of several minutes. However, in order to prevent superficial swelling of the protein on the ceramic tiling, an upper limit should be set for the temperature and the concentration of the cleaning solution.

| Not just a promise – it's our responsibility |

We certify sustainable construction according to

- BREEAM
- LEED
- DGNB

Please feel free to contact us!

Dr. Mechthild Haveresch-Kock

Manager R&D- Analytics/Eco Labelling

Global Technology Center Rosendahl & Antony

T +49 2547 910-350

E-Mail: haveresch-kock.mechthild@de.sika.com



| Also available from SCHÖNOX and Sika



SCHÖNOX® Floor
Covering Systems

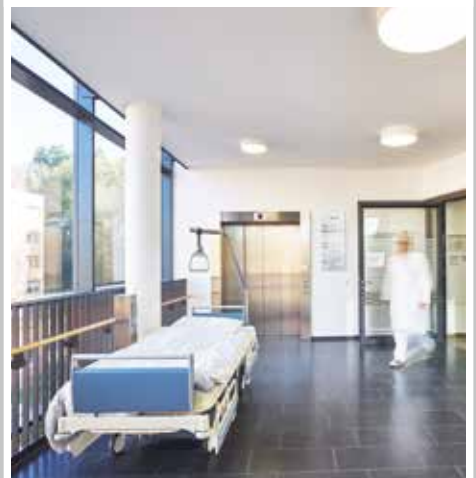


Sika Flooring Systems

SAFETY FIRST Sarah Peake on infection prevention and control in healthcare facilities 20	SUSTAINABILITY Get informed on design essentials for durable and sustainable finishes 7	PATIENT FOCUS Equal Opportunity for a Healthy Life – Jo Vandeurzen, Flemish Minister for Welfare, Health and Family, on creating a caring Flanders – Belgium 16
INNOVATIONS How LEAN management reduced process time up to 90% at the Elisabeth Hospital 30	CARE AND CLEANING Professional support for maintenance to secure lasting comfort and design 50	



Sika Corporate Healthcare Magazine



**Sika Deutschland GmbH
Subsidiary Rosendahl**

Alfred-Nobel-Straße 6
48720 Rosendahl, Germany
Tel.: +49 (0)2547-910-0
E-Mail: info@schoenox.de
www.schoenox.com